

RESIDENCE CRESPY

Rue Georges Lasserre - 33400 Talence

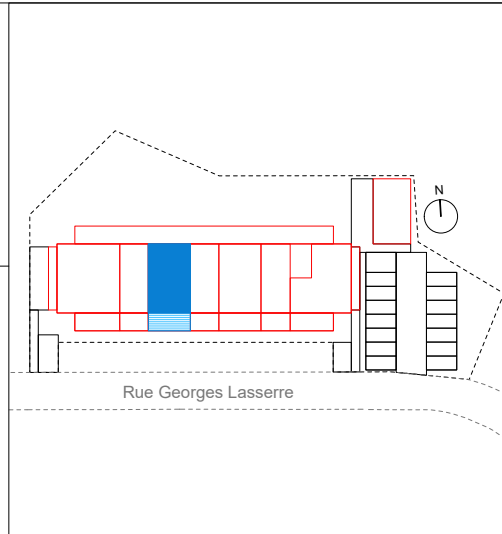
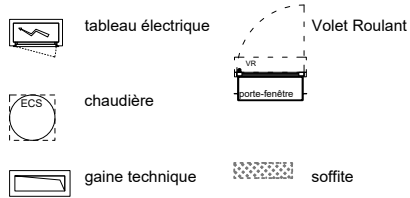
MOA : Domofrance

Architecte : Edgar (Elluin Duolé Gillon architecture)

Performance thermique : RE 2020

Date : 19/02/2024

Indice : B



Appartement

R+1	A03	T3
Séjour / Cuisine		40.27
Dégagement		0.9
WC		1.54
Salle de bain		5.07
Chambre 1		11.71
Chambre 2		10.44
Total surface habitable :		69.93
Terrasse		16.42

